

Runyes® 3DS

Intraoral Scanner



CELEBRATE 20 YEARS



Runyes Medical Instrument Co.,Ltd.

Add:No. 456, Tonghui Road, Jiangbei Investment & Pioneering Park C, Ningbo,China

Tel:+86-574-27709922 Fax:+86-574-27709923 Http://en.runyes.com E-mail:runyes@runyes.com

Perfect your clinic!



Chair-Side System

Immediate Restoration

Crown in single visit
Scan-Design-Print



Our Strength

Runyes intraoral scanner has fast and easy image capturing technology, which can provide reliable, accurate & complete data for digital dental impression. Providing patients with a comfortable and efficient treatment experience, our scanners make it easier for dentists to diagnose and communicate with patients. Runyes scanner is an open system scanner, which provides the access to the latest technology equipment available in the market. It has a range of applications which includes digital restoration, digital orthodontics, surgical guide of digital implant, etc.

01 Powderless, Real color, Light and Portable

Easier to operate with net weight of 210g.
Simple and elegant with a colour combination of gray and white.
Looks trendy and very user friendly.
Support multi-angle image capture in patient's mouth.
Hand-held design makes operation more convenient.

02 Constant Temperature Protection Design

Dual heating options from internal & external heater, maintain the temperature of the scanner to prevent it from fogging.

03 Detachable Scanner Head

Easy to change scanner head.
Scanner heads are autoclavable and multiple times usable.
Long life narrow heads for easy reach to posteriors.



04 LED Light Source Without Radiation

High quality light source generates no radiation.
Real color scans.
Real imaging provided.

05 Artificial Intelligence Recognition

Effectively remove excess soft tissue data

06 Faster

Quick reset to save time.
Moves smoothly while scanning or collecting data.
No need to focus from specific distance or specific angle.



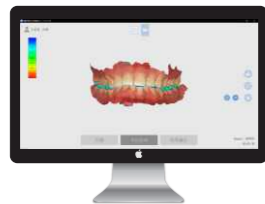
07 Open Data

Choose different restore-design software.
Choose output orientation, making it better to connect with design software.

08 Powerful Accessories Supports (Optional)

Runyes 3DS Intraoral Scanner Mobile Cart, customized for Runyes Scanners.
Powerful configuration, combined with ergonomics, brings better control and sensory experience.

Auxiliary Function



OUTPUT



3SHAPE



EXO CAD

Runyes® 3DS Powderless Real Color Scanning Model: IOS-11			
Accuracy	20um	Export File	STL,PLY,OBJ
Scanning Distance	0-17mm	Scanner Size	240x49.5x30.5mm
Scanner Weight	210g	Operating Time	>30000hrs
Image Capture Technology	Optical continuous video collection	Imaging Mode	Synchronous 3D video
		Quick Reset	Yes
		Model Optimization	Yes

Miscellaneous Function



Occlusion Evaluation



Tips of Filling



Undercut Examination

Recommend Computer Specification			
Microsoft Windows 10, 64bit Pro edition or higher			
CPU Laptop	Intel Core i7-8700 or higher i7-8750 or higher	System	WINDOWS 10 Professional edition/Corporate edition
Graphics Card	NVIDIA GeForce1660, 6GB or higher	Monitor Resolution	1920x1080
Memory	More than 16G	Port	USB/3.0
Hard Disk	More than 256G SSD or 128G+1T mechanical hard disk	Supply Voltage	110V~240V,50Hz
		Power Consumption	25VA

Digital Solution



Doctors' Benefits

- High quality restoration effect.
- Accurate digital impression.
- Real-time scanning.
- Crown in single day.
- Perfect fitting of crown.
- Take impression easily.
- Powderless scanning.
- No need of impression material.
- Reduced manual errors.
- Higher efficiency.
- Speed up making impression, reduce operation time.
- Save material and logistic cost.

Patients' Benefits

- More comfortable experience.
- Powderless scanning, prevent discomfort.
- No gagging to patient.
- Higher degree of satisfaction.
- No repeated impressions.



Our Strength

Runyes DLP 3D printer is a kind of desktop 3D printer specially designed for dentistry. With microcomputer control and innovative light processing unit, the laser efficiency is enhanced, so that the density and accuracy of each position are consistent with each print. The surface of the printed product is smooth, the details are vivid, and the rate of deviation is low, thereby providing revolutionary printing quality and printing reliability.



3D Printer With DLP Technology



Original United States Optical Machine



Accuracy Up To 10 μ m



Long Life Consumables



Large Number Of Models Can Be Printed At Same Time



High Quality Fine Print



Fastest Printing

Advance Features

- ◆ Using the original United States optical machine with the accuracy of 50 μ m.
- ◆ Using precision modules, accuracy of 10 μ m, with more stable building platform.
- ◆ Use tilting stripping to increase the life of the resin tank.
- ◆ Two resin tanks for different materials.
- ◆ Convenient to level printing base plane and remove the model.
- ◆ Print a tooth model of size 18X32X56mm within 20min.
- ◆ Intelligent offline printing, no need of special computer with directly transmitted by WLAN or USB.
- ◆ Compact & Stylish.



Runyes 3D Printer Chairside Production

Printing 3D Technology	DLP 3D Printer
Screen	5 inch Colorful IPS Touch Screen
Build Volume	89.6x56x95mm
Slice Thickness	25-50 microns
XY Resolution	50um
Positional Accuracy	1280x720 Pixel
Material Type	Photosensitive Resin
Print Speed	30mm/h
Supported Formats	.STL/.OBJ/.3DS/.AMF
System	WIN XP/Vista/7/8/10
Machine Size	32x30x58.5cm
Weight	G.W. 25KG N.W. 20KG
Power Supply	AC 220V/ 50HZ
Power	65W
Data Transmission	USB, USB Flash Disk

R1 Implant Guide System

R1 Simple Guide Surgery Kit with variable lengths & diameter makes all operations from drilling to implant placement come true on guided template, and makes you enjoy the whole implant operation.



No guide ring navigation & extra drills required, our system can drill to the last bur.



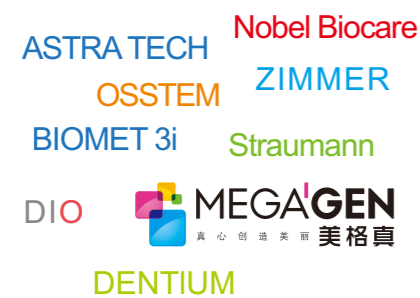
- Minimally Invasive Operation, Relieve Patient's Pain**
 - No need for flap opening during surgery
 - Reduce pain and swelling associated with gingiva incision, taking less time for healing.

- Very Accurate And Safe**
 - Accurately diagnose the most suitable implant location according to CT and Intraoral scanning data.
 - Improve the rate of success.

- Implant Concept: Restore-guide**
 - R1 surgical guide system provides the feature of complete planning in advance, achieving accurate positioning and guidance during surgery. It is easier to operate and control, presenting desired & accurate implant position and direction.

Universal Compatibility

The R1 Guided Surgery Kit has been designed in such a way that it will work with all implant systems.



Dental Digital Practising Center (DDP Center)

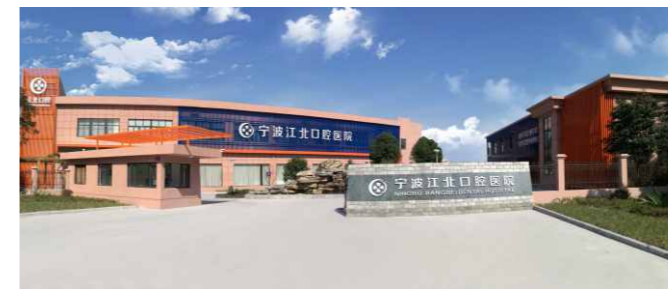
Runyes CAD/CAM Center started to be under construction from 2017 and completed in Oct, 2018. The Digital center adheres to the idea of "3D Intraoral scanning and 3D printing", focuses on traditional restore technique, improves and processes all kinds of products concerning implant restoration, digital guide plate, inlay, partial denture fixation and restoration, complete removable denture restoration.etc. It provides customers with technique support and training service.



Jiangbei Dental Hospital

Ningbo Jiangbei Dental Hospital is the only specialized dental hospital in China who sets clinical stomatology and oral education training as a unit.

Relying on Ningbo international dental industrial park, the hospital obtain the resource sharing and technical support in equipment, instruments and materials used for oral diagnosis, treatment and disinfection.



Ningbo Jiangbei Dental Hospital united <Fashion Dentist> commercial college, trains about 3000 dentists every year through online and offline training.



The simulator room is equipped with emulational head-form, which can realize simulative oral practical teaching.